

# I<sup>2</sup>C & Microwire Serial ICs Monitor and Commander



**(use by PonyProg base board)**

I have been using the programmer PonyProg (<http://www.cs.unibo.it/~lanconel/>) and the program belonging to that, and I am satisfied with them very much. It is also a great thing that you are continuously developing both the hardware and the software and the promised developments are remarkable.

Based upon your basic board I extended your programmer with an additional function.

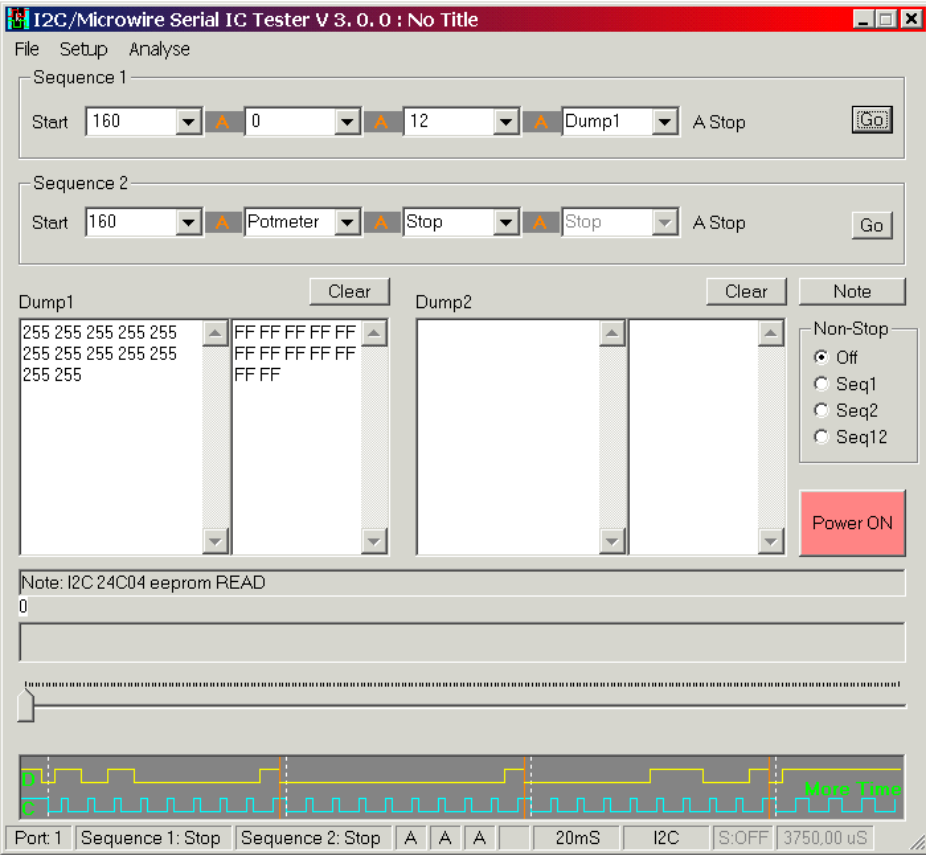
By using the basic board developed by you and by a very simple test-board and a Test program developed by me, it is possible to test and to monitor peripheral and memory circuits with I2C/Microwire bus. It can be a great help with trying out and testing the different types of peripheral IC-s, and studying and understanding how these chips are working.

The Test board is a non fixed wired board, by which man can lead the I2C/Microwire bus to any – mainly peripheral – IC (clock, DAC, ADC, etc) you are going to test. After making the necessary circuits (also on the Test board), man can issue direct I2C/Microwire commands and can monitor the received data with the help of the program.

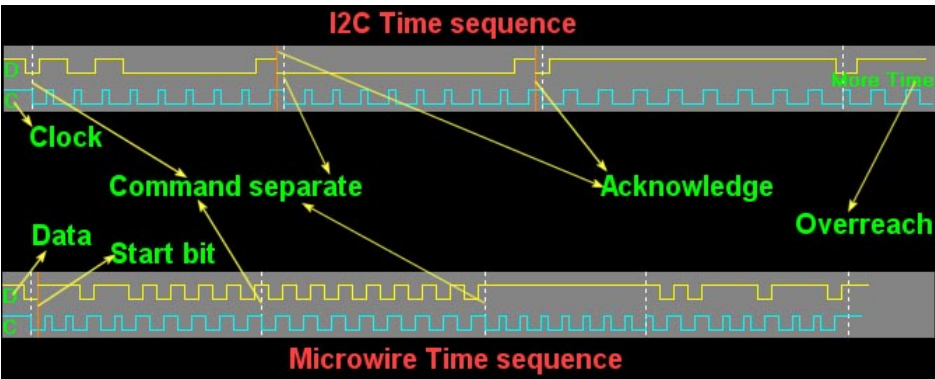
**The circuit diagram of the Test board and the test program itself for free use.**

**Software in run Win9x/2000/NT4.**

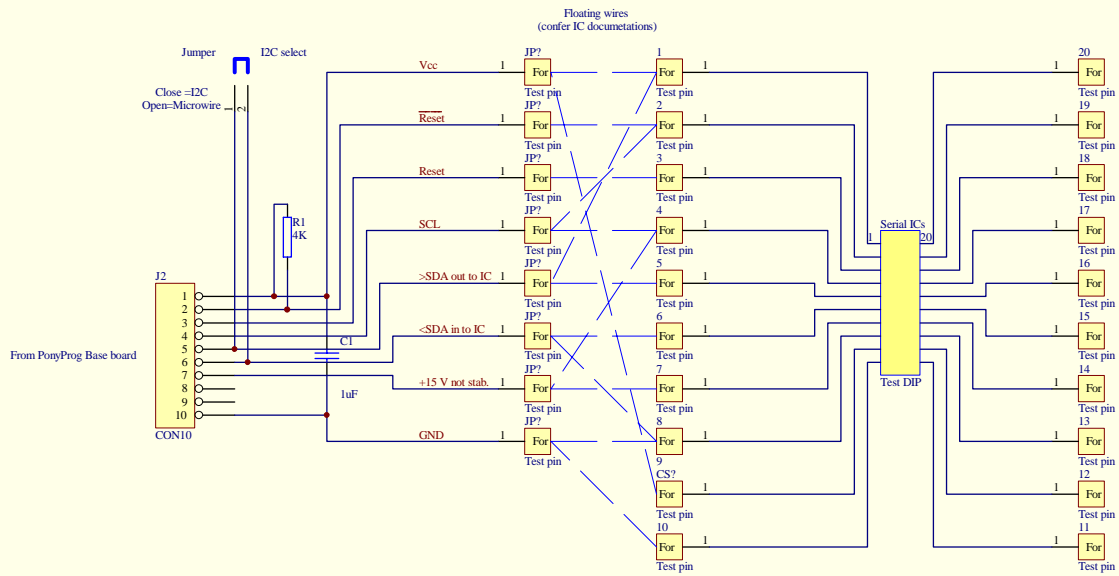
**The Software:**



**The Analyser:**



**The circuit diagram:**



Title		 Serial IC tester
Size	Number	Revision
B	www.magi.ini.hu	2.0
Date:	4-Mar-2001	Sheet of
File:	E:\WINDOWS\ADV\SCH\SERIAL.LSCH	Drawn By: István Magi